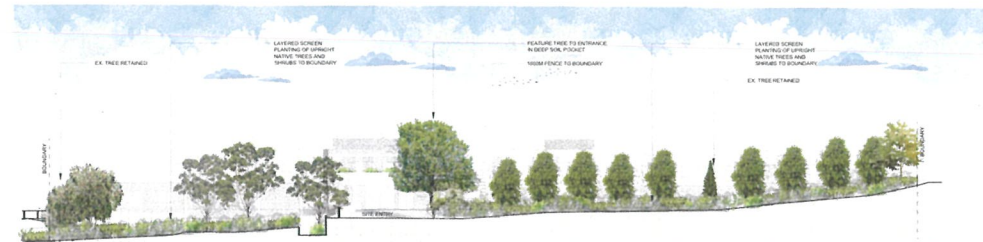




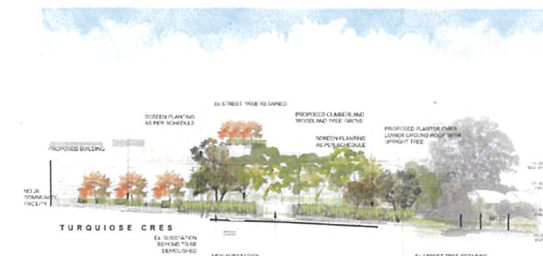
NORTH ELEVATION 1:1000



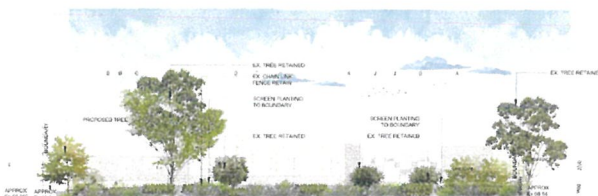
NORTH ELEVATION (QUARRY RD) 1:1000



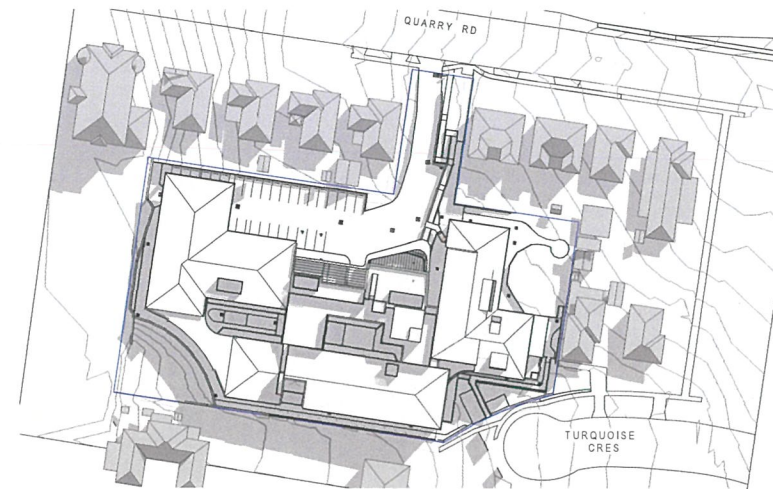
EAST ELEVATION 1:1000



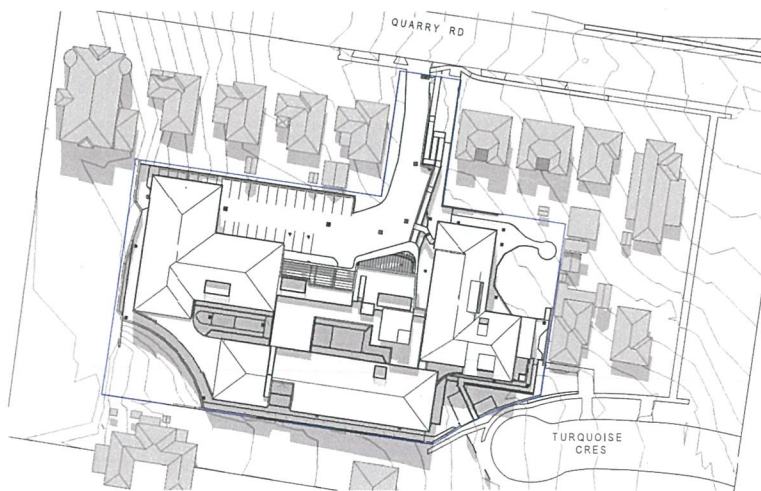
SOUTH ELEVATION (TURQUOISE CRES) 1:1000



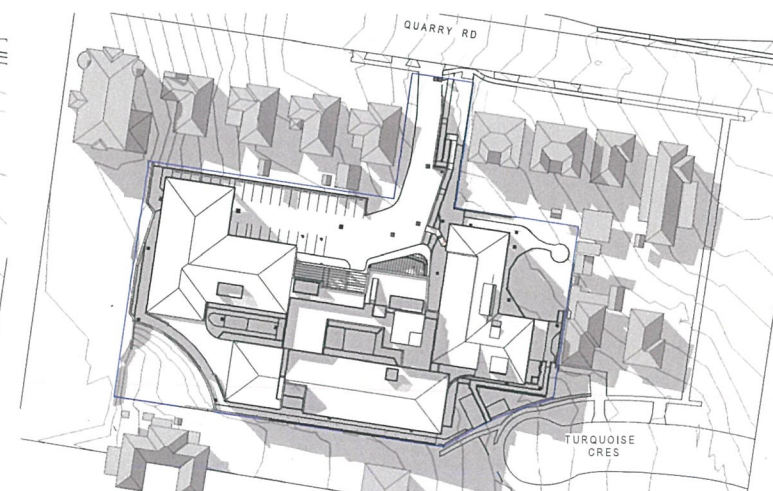
WEST ELEVATION 1:1000



SHADOW DIAGRAM - 21 JUNE - 9am



SHADOW DIAGRAM - 21 JUNE - 12pm



SHADOW DIAGRAM - 21 JUNE - 3pm

ISSUE	DESCRIPTION	APPROVED	DATE
A	DRAFT DA	JG	14/06/18
B	DEVELOPMENT APPLICATION	JG	20/06/18
C	DEVELOPMENT APPLICATION	JG	27/06/18
D	RFI SUBMISSION	TW	07/11/19

CONCEPTS AND INFORMATION CONTAINED IN THIS DRAWING ARE COPYRIGHT AND MAY NOT BE REPRODUCED IN WHOLE OR PART OR BY ANY MEANS WITHOUT THE WRITTEN PERMISSION OF JACKSON TEECE. DO NOT SCALE THIS DRAWING. USE DIMENSIONS ONLY. VERIFY ALL PROJECT DIMENSIONS BEFORE COMMENCING ON-SITE WORK OR OFF-SITE FABRICATION. NOTIFY JACKSON TEECE OF ANY DISCREPANCIES AND SEEK INSTRUCTIONS.

THIS DRAWING ISSUE HAS BEEN REVIEWED FOR
DEVELOPMENT APPLICATION
APPROVED BY: TW
CHECKED BY: MA

CLIENT
OPAL AGED CARE

PROJECT
OPAL BOSSLEY PARK

DRAWING TITLE
NOTIFICATION
PLANS

Jackson Teece Architecture
Lot 1, Pier 8-9 23 Hickson Road
Wah Bay New South Wales 2000 Australia
T 61 2 9290 2722 F 61 2 9290 1150
E sydney@jacksonteece.com
Jackson Teece Chartered Surveyors Pty Ltd
Trading as Jackson Teece
ABN 15 083 857 290
Nominated Architect Ian Brodie (4273)

PROJECT No.
2017084
DATE
06/02/16
SCALE@ A4
As indicated
DRAWN
BN/MA
ISSUE
D

Date generated: 07/11/2019 11:45:15 AM

C:\Users\bnguyen\Documents\2017084_JT_XX_SHT_AR_18-18-12-20_bnguyen.rvt

JACKSON TEECE



VIEW 1 FROM TURQUOISE CRESCENT

AMENDMENTS

ISSUE	DESCRIPTION	APPROVED	DATE
A	R/R SUBMISSION	TW	07/11/19

THIS DRAWING ISSUE HAS BEEN REVIEWED FOR

DEVELOPMENT APPLICATION

APPROVED BY: TW
CHECKED BY: MA

CONCEPTS AND INFORMATION CONTAINED IN THIS DRAWING ARE COPYRIGHT AND MAY NOT BE REPRODUCED IN WHOLE OR PART OR BY ANY MEDIUM, WITHOUT THE WRITTEN PERMISSION OF JACKSON TEECE. DO NOT SCALE THIS DRAWING. USE FIGURED DIMENSIONS ONLY. VERIFY ALL PROJECT DIMENSIONS BEFORE COMMENCING ON-SITE WORK OR OFF-SITE FABRICATION. NOTIFY JACKSON TEECE OF ANY DISCREPANCIES AND SEEK INSTRUCTIONS.

CONSULTANTS

PROJECT MANAGEMENT
SIGNATURE PM
Suite 204, 272 Pacific Hwy, Crown Nest
NSW 2065
T 1300 852 197 E info@jacksonteece.com.au



specialist aged care

CLIENT
OPAL AGED CARE
PHOTOMONTAGE VIEW 1

DATE	SCALE	@ A1	DRAWN
FEBRUARY 2018			BN/MA
PROJECT No.	DRAWING No.	ISSUE	
2017084	DA-900	A	

PROJECT
OPAL BOSSLEY PARK

Lot 1, Pier 8-9, 23 Hickson Road
Walsh Bay New South Wales 2000 Australia
T 61 2 9290 2722 F 61 2 9290 1150
E sydney@jacksonteece.com
Jackson Teece Chairman Willie Py Ltd
Trading as Jackson Teece
ABN 15 083 837 292
Nominated Architect Ian Brodie (4575)

JACKSON TEECE



LEGEND



EXISTING 1 STOREY NO.25
TURQUOISE CRESCENT

VIEW 2 FROM TURQUOISE CRESCENT

AMENDMENTS

ISSUE	DESCRIPTION	APPROVED	DATE
A	REV SUBMISSION	TW	07/11/19

THIS DRAWING ISSUE HAS BEEN REVIEWED FOR

DEVELOPMENT APPLICATION

APPROVED BY: TW
CHECKED BY: MA

CONCEPTS AND INFORMATION CONTAINED IN THIS DRAWING ARE COPYRIGHT AND MAY NOT BE REPRODUCED IN WHOLE OR PART OR BY ANY MEDIUM WITHOUT THE WRITTEN PERMISSION OF JACKSON TEECE. DO NOT SCALE THIS DRAWING. USE FIGURED DIMENSIONS ONLY. VERIFY ALL PROJECT DIMENSIONS BEFORE COMMENCING ON-SITE WORK OR OFF-SITE FABRICATION. NOTIFY JACKSON TEECE OF ANY DISCREPANCIES AND SEEK INSTRUCTIONS.

CONSULTANTS

PROJECT MANAGEMENT
SIGNATURE PM
Suite 204, 272 Pacific Hwy, Crown Nest
NSW 2060
T 1500 852
187 E: info@signaturepm.com.au



specialist aged care

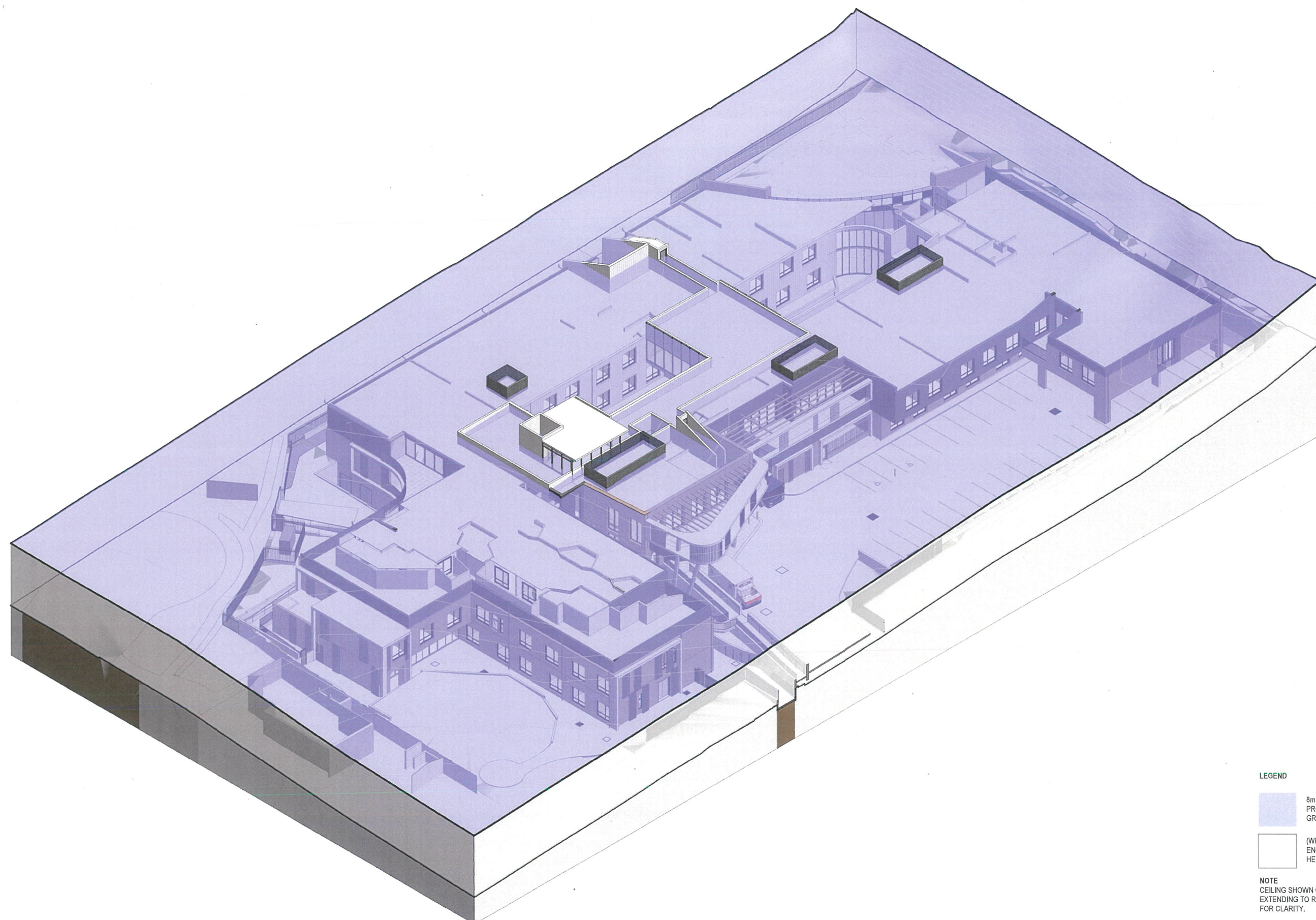
CLIENT
OPAL AGED CARE
PHOTOMONTAGE VIEW 2

DATE	SCALE	@ A1	DRAWN
FEBRUARY 2018	1 : 500		BN/MA
PROJECT No.	DRAWING No.	ISSUE	
2017084	DA-901	A	

PROJECT
OPAL BOSSLEY PARK

Lot 1, Pier 8-9, 23 Hickson Road
Walsh Bay New South Wales 2000 Australia
T 61 2 9290 2722 F 61 2 9290 1150
E: sydney@jacksonteece.com
Jackson Teece Chestnut Hill Pty Ltd
Trading as Jackson Teece
ABN 15 683 837 590
Nominated Architect Ian Brodie (42725)

JACKSON TEECE



LEGEND

- 8m SEPP SENIORS HEIGHT PLANE
PROJECTED ABOVE THE EXISTING
GROUND LEVELS
- (WHITE SHADED)
ENCROACHMENT ABOVE SEPP
HEIGHT PLANE

NOTE
CEILING SHOWN ONLY. ROOF AND WALLS
EXTENDING TO ROOF ARE NOT SHOWN
FOR CLARITY.

AMENDMENTS			
ISSUE	DESCRIPTION	APPROVED	DATE
P1	ISSUE FOR INFORMATION	MA	16/10/19
P2	ISSUE FOR INFORMATION	MA	18/10/19
P3	ISSUE FOR INFORMATION	TW	22/10/19
A	RFI SUBMISSION	TW	07/11/19

THIS DRAWING ISSUE HAS BEEN REVIEWED FOR

DEVELOPMENT APPLICATION

APPROVED BY: TW
CHECKED BY: MA

CONCEPTS AND INFORMATION CONTAINED IN THIS DRAWING ARE COPYRIGHT AND
MAY NOT BE REPRODUCED IN WHOLE OR PART OR BY ANY MEDIUM, WITHOUT THE
WRITTEN PERMISSION OF JACKSON TEECE. DO NOT SCALE THIS DRAWING. USE
FIGURED DIMENSIONS ONLY. VERIFY ALL PROJECT DIMENSIONS BEFORE
COMMENCING ON-SITE WORK OR OFF-SITE FABRICATION. NOTIFY JACKSON TEECE
OF ANY DISCREPANCIES AND SEEK INSTRUCTIONS.



CONSULTANTS

PROJECT MANAGEMENT
SIGNATURE PM
Suite 204, 272 Pacific Hwy, Crown Hill
NSW 2065
T 1300 852
197 E info@signaturepm.com.au



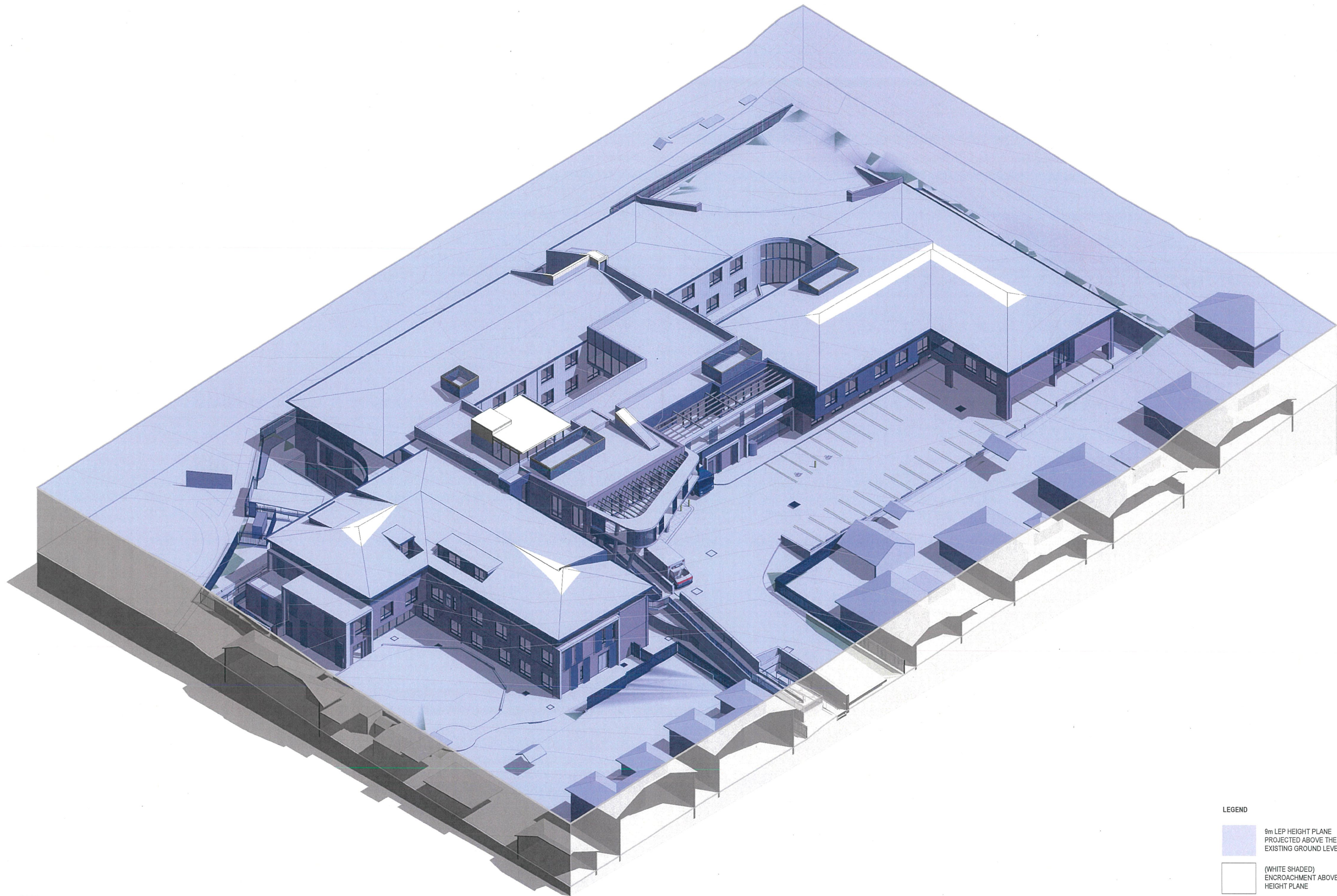
CLIENT
OPAL AGED CARE
8M SEPP SENIORS HEIGHT CLEARANCE

DATE	SCALE	@ A1	DRAWN
06/06/16	1 : 500		BN/MA
PROJECT No.	DRAWING No.	ISSUE	
2017084	DA-910	A	

PROJECT
OPAL BOSSLEY PARK

744 Hunter Street
Newcastle West New South Wales 2302 Australia
T 61 2 4969 5199 F 61 2 4969 6177
E newcastle@jacksonteece.com
Jackson Teece Chesterman Wills Pty Ltd
Trading as Jackson Teece
ABN 15 083 837 299
Nominated Architect Ian Brodie (4475)

JACKSON TEECE



LEGEND

9m LEP HEIGHT PLANE
PROJECTED ABOVE THE
EXISTING GROUND LEVELS

(WHITE SHADED)
ENCROACHMENT ABOVE LEP
HEIGHT PLANE

AMENDMENTS			
ISSUE	DESCRIPTION	APPROVED	DATE
P1	ISSUE FOR INFORMATION	MA	16/10/19
P2	ISSUE FOR INFORMATION	MA	16/10/19
P3	ISSUE FOR INFORMATION	TW	20/10/19
A	RFI SUBMISSION	TW	07/11/19

THIS DRAWING ISSUE HAS BEEN REVIEWED FOR

DEVELOPMENT APPLICATION

APPROVED BY: TW
CHECKED BY: MA

CONCEPTS AND INFORMATION CONTAINED IN THIS DRAWING ARE COPYRIGHT AND MAY NOT BE REPRODUCED IN WHOLE OR PART OR BY ANY MEANS, WITHOUT THE WRITTEN PERMISSION OF JACKSON TEECE. DO NOT SCALE THIS DRAWING. USE FIGURED DIMENSIONS ONLY. VERIFY ALL PROJECT DIMENSIONS BEFORE COMMENCING ON-SITE WORK OR OFF-SITE FABRICATION. NOTIFY JACKSON TEECE OF ANY DISCREPANCIES AND SEEK INSTRUCTIONS.



CONSULTANTS

PROJECT MANAGEMENT
SIGNATURE PM
Suite 204, 272 Pacific Hwy, Crown West
NSW 2065
T 1300 652
197 E info@opalspecialistcare.com.au



CLIENT
OPAL AGED CARE
9M LEP HEIGHT CLEARANCE

DATE	SCALE @ A1	DRAWN
06/06/16	1 : 500	BN/MA
PROJECT No. 2017084	DRAWING No. DA-911	ISSUE A

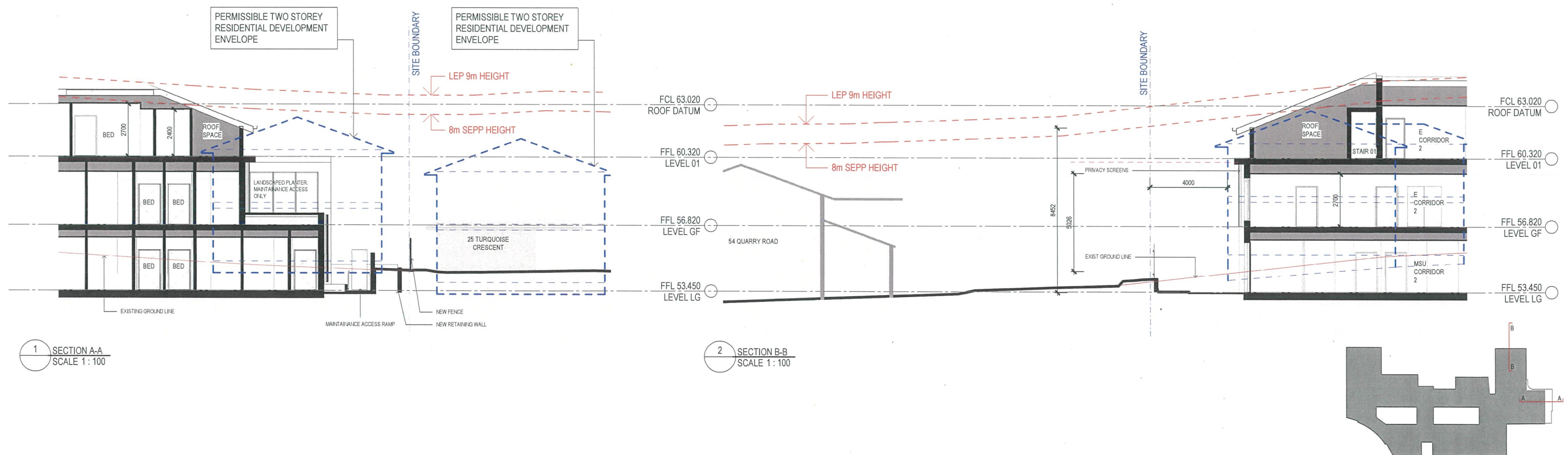
PROJECT
OPAL BOSSLEY PARK

744 Hunter Street
Newcastle West New South Wales 2302 Australia
T 61 2 4969 5199 F 61 2 4969 6177
E newcastle@jacksonteece.com
Jackson Teece Chartered Surveyors Pty Ltd
Trading as Jackson Teece
ABN 15 083 837 290
Nominated Architect (as Breake (4275))

JACKSON TEECE



VIEW FROM TURQUOISE CRESCENT - VIEW 1A



AMENDMENTS			
ISSUE	DESCRIPTION	APPROVED	DATE
A	RPI SUBMISSION	TW	07/11/19

THIS DRAWING ISSUE HAS BEEN REVIEWED FOR

DEVELOPMENT APPLICATION

APPROVED BY: TW
CHECKED BY: MA

CONCEPTS AND INFORMATION CONTAINED IN THIS DRAWING ARE COPYRIGHT AND MAY NOT BE REPRODUCED IN WHOLE OR PART OR BY ANY MEANS, WITHOUT THE WRITTEN PERMISSION OF JACKSON TEECE. DO NOT SCALE THIS DRAWING. USE FIGURED DIMENSIONS ONLY. VERIFY ALL PROJECT DIMENSIONS BEFORE COMMENCING ON-SITE WORK OR OFF-SITE FABRICATION. NOTIFY JACKSON TEECE OF ANY DISCREPANCIES AND SEEK INSTRUCTIONS.

CONSULTANTS

PROJECT MANAGEMENT
SIGNATURE PM
Suite 204, 272 Pacific Hwy, Crown Nest
NSW 2065
T 1300 652
191 E info@signature.com.au



specialist aged care

CLIENT
OPAL AGED CARE
DETAIL SECTION - PROPOSED DEVELOPMENT
ENVELOPE COMPARED WITH PERMISSIBLE
RESIDENTIAL ALTERNATIVE

DATE: 06/06/16
SCALE: @A1
As indicated
DRAWN: BN/MA

PROJECT No. 2017084
DRAWING No. SK-037
ISSUE A

PROJECT
OPAL BOSSLEY PARK

744 Hunter Street
Newcastle West New South Wales 2302 Australia
T 61 2 4969 5199 F 61 2 4969 6177
E newcastle@jacksonteece.com
Jackson Teece Chartered Surveyors Pty Ltd
Trading as Jackson Teece
ABN 15 081 837 290
Nominated Architect Ian Brodie (4475)

JACKSON TEECE



VIEW FROM TURQUOISE CRESCENT - VIEW 1A

AMENDMENTS			
ISSUE	DESCRIPTION	APPROVED	DATE
A	RPI SUBMISSION	TW	07/11/19

THIS DRAWING ISSUE HAS BEEN REVIEWED FOR

DEVELOPMENT APPLICATION

APPROVED BY: TW
CHECKED BY: MA

CONCEPTS AND INFORMATION CONTAINED IN THIS DRAWING ARE COPYRIGHT AND MAY NOT BE REPRODUCED IN WHOLE OR PART OR BY ANY MEANS, WITHOUT THE WRITTEN PERMISSION OF JACKSON TEECE. DO NOT SCALE THIS DRAWING. USE FIGURED DIMENSIONS ONLY. VERIFY ALL PROJECT DIMENSIONS BEFORE COMMENCING ON-SITE WORK OR OFF-SITE FABRICATION. NOTIFY JACKSON TEECE OF ANY DISCREPANCIES AND SEEK INSTRUCTIONS.

CONSULTANTS

PROJECT MANAGEMENT
SIGNATURE PM
Suite 204, 272 Pacific Hwy, Crown Nest
NSW 2065
T 1300 652
181 E info@signaturesm.com.au



specialist aged care

CLIENT
OPAL AGED CARE
PHOTOMONTAGE

DATE	SCALE	@ A1	DRAWN
OCTOBER 2019	1 : 500		BN
PROJECT No.	DRAWING No.	ISSUE	
2017084	SK-038	A	

PROJECT
OPAL BOSSLEY PARK

Lot 1, Pier 8-9, 23 Hickson Road
Walsh Bay New South Wales 2000 Australia
T 61 2 9290 2722 F 61 2 9290 1150
E sydney@jacksonteece.com
Jackson Teece Chestman Willis Pty Ltd
Trading as Jackson Teece
ABN 15 083 837 290
Nominated Architect Ian Brodie (4275)

JACKSON TEECE



VIEW FROM TURQUOISE CRESCENT - VIEW 2A

AMENDMENTS

ISSUE	DESCRIPTION
A	REV SUBMISSION

APPROVED	DATE
TW	07/11/19

THIS DRAWING ISSUE HAS BEEN REVIEWED FOR

DEVELOPMENT APPLICATION

APPROVED BY	CHECKED BY
TW	MA

CONCEPTS AND INFORMATION CONTAINED IN THIS DRAWING ARE COPYRIGHT AND MAY NOT BE REPRODUCED IN WHOLE OR PART OR BY ANY MEDIUM, WITHOUT THE WRITTEN PERMISSION OF JACKSON TEECE. DO NOT SCALE THIS DRAWING. USE FIGURED DIMENSIONS ONLY. VERIFY ALL PROJECT DIMENSIONS BEFORE COMMENCING ON-SITE WORK OR OFF-SITE FABRICATION. NOTIFY JACKSON TEECE OF ANY DISCREPANCIES AND SEEK INSTRUCTIONS.

CONSULTANTS

PROJECT MANAGEMENT
SIGNATURE PM
Site 204, 272 Pacific Hwy, Crown Nest
NSW 2065
T 1300 852
197 E info@opalagedcare.com.au



specialist aged care

CLIENT
OPAL AGED CARE
PHOTOMONTAGE

DATE	SCALE	@ A1	DRAWN
OCTOBER 2019	1 : 500		BN
PROJECT No.	DRAWING No.	ISSUE	
2017084	SK-039	A	

PROJECT
OPAL BOSSLEY PARK

Lot 1, Pier 8-9, 23 Hickson Road
Walsh Bay New South Wales 2000 Australia
T 61 2 9290 2722 F 61 2 9290 1150
E sydney@jacksonteece.com
Jackson Teece Chesterman Wills Pty Ltd
Trading as Jackson Teece
ABN 15 083 837 290
Nominated Architect (as Brellie (4275))

JACKSON TEECE



VIEW FROM TURQUOISE CRESCENT - VIEW 2A

AMENDMENTS

ISSUE	DESCRIPTION	APPROVED	DATE
A	RPI SUBMISSION	TW	07/11/19

THIS DRAWING ISSUE HAS BEEN REVIEWED FOR

DEVELOPMENT APPLICATION

APPROVED BY
TW

CHECKED BY
MA

CONCEPTS AND INFORMATION CONTAINED IN THIS DRAWING ARE COPYRIGHT AND MAY NOT BE REPRODUCED IN WHOLE OR PART OR BY ANY MEDIUM, WITHOUT THE WRITTEN PERMISSION OF JACKSON TEECE. DO NOT SCALE THIS DRAWING. USE FIGURED DIMENSIONS ONLY. VERIFY ALL PROJECT DIMENSIONS BEFORE COMMENCING ON-SITE WORK OR OFF-SITE FABRICATION. NOTIFY JACKSON TEECE OF ANY DISCREPANCIES AND SEEK INSTRUCTIONS.

CONSULTANTS

PROJECT MANAGEMENT
SIGNATURE PM
Suite 204, 372 Pacific Hwy, Crows Nest
NSW 2055
T 1300 052
187 E info@signaturepm.com.au



specialist aged care

CLIENT
OPAL AGED CARE
PHOTOMONTAGE

DATE	SCALE	@A1	DRAWN
OCTOBER 2019	1 : 500		BN
PROJECT No.	DRAWING No.	ISSUE	
2017084	SK-040	A	

PROJECT
OPAL BOSSLEY PARK

Lot 1, Pier 8-9, 23 Hickson Road
Walsh Bay New South Wales 2000 Australia
T 61 2 9290 2722 F 61 2 9290 1150
E sydney@jacksonteece.com
Jackson Teece Charitable Willing Pty Ltd
Trading as Jackson Teece
ABN 15 083 837 290
Nominated Architect Ian Brodie (4275)

JACKSON TEECE